



EHS Data Newsletter Q1 2010

INSIDE THIS ISSUE:

Welcome from Managing Director	1
Inmet Mining adopt MP5 across their closed sites division in North America	1
EHS Data Launch new MP5.web product	2
New modifications to our incident management system	3
Forthcoming presentation at Goldfields Environmental Management group in Western Australia	4
Bluescope Steel improve ability to report environmental data using MP5	5
News in Brief....	6

Contact Details

EHS Data Ltd.,
 Business and Commerce
 Centre,
 Manners Road,
 Newark.
 Notts
 England.
 NG24 1BS
 Tel +44 (0) 845 496 2158
 Fax +44 (0) 870 486 7989
 info@ehsdata.com
 www.ehsdata.com

WELCOME TO THIS ISSUE OF OUR NEWSLETTER FROM MANAGING DIRECTOR PHIL ELY

Firstly I wish you all a belated Happy New Year. We hope you have a great 2010. The daffodils in the UK have grown letting us know that Spring is on the way after what, by UK standards, has been a cold Winter. We have already been busy with various tasks.

I spent half of February overseas as part of an EU trade mission to Tokyo to look at establishing business links in Japan. I then went to Australia to visit a number of clients including two, AngloGold Ashanti at Sunrise Dam in Western Australia and Kagara gold in north Queensland, who have just purchased our systems to manage EHS Data. At the same time a colleague visited a new client (Inmet Mining) in Canada



who have elected to use our software to manage all their data at 8 closed sites in Canada and the US (see story below).

Meanwhile some of our developers have been busy back at the office completing the first version of our new MP5.Web product which enhances the previous web versions and ena-

bles many of our clients to share data more broadly and simply around the organization (see more detail in this newsletter).

With the number of customers we have interested in our systems, 2010 looks like being a fun year. I hope I get the chance to meet many of you.

INMET MINING ADOPT MP5 ACROSS THEIR CLOSED SITES DIVISION IN NORTH AMERICA

Inmet mining are is a Canadian-based global mining company that produces copper, zinc and gold. They own and operate mining operations in Turkey, Finland, Canada and Spain and also have interest in a mining operation in Papua New Guinea and a pre development project in Panama.

Inmet have permit obligations to manage the environmental impacts of all their operations during exploration, construction, operation and post-closure. This brings with it an intensive monitoring and reporting programme with many

targets set by the regulators. Additionally, Inmet have a very proactive culture in managing their impacts which is embodied in their Leadership Charter and, as a consequence, their sustainability programme. These reflect core values of:

- Operating safely
- Making a profit
- Protecting the environment and
- Treating people and communities well

Sustainability Performance is measured using indica-

tors from the Global Reporting Initiative (GRI) and *Towards Sustainable Mining (TSM)*, an initiative of the Mining Association of Canada (MAC), along with several other performance indicators developed by Inmet. All of this clearly involves a need to manage large amounts of data.

In 2009 Inmet Mining in Canada purchased MP5 initially for the management of data associated with it's closed sites team which currently manages closed mine sites at:

- Samatosum - a 300 hectare former (see page 4)

EHS DATA LAUNCH NEW MP5.WEB PRODUCT

For many years we have provided our clients with, we believe, the most flexible and intuitive EHS data management products. We are now launching a new web-based product MP5.Web which will function alongside the MP5 client install.

MP-5.Web is an easy-to-use browser-based application which quickly and easily finds data, compiles reports,

swapped.

Future developments

Significant development are planned for the coming months. Some of the items on the agenda are:

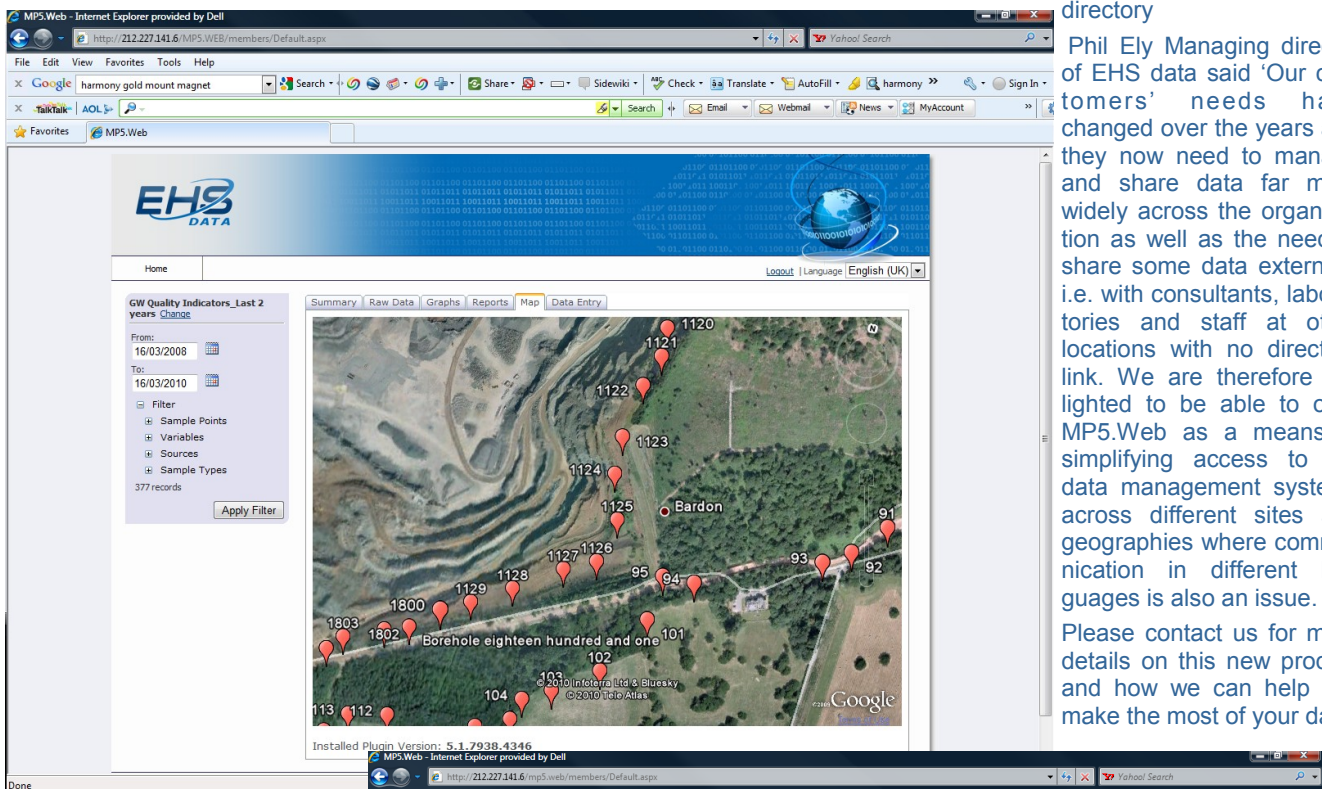
- Dashboards for users to view and define key information,
- Mapping enhancements to include thematics and charts plus

the ability to add map layers.

- A 'my tasks' module to link in with monitoring schedules and data entry / sample management modules.
- RSS feeds to alert e.g. trigger breaches and when tasks are due / overdue.
- Windows log-in under active directory

Phil Ely Managing director of EHS data said 'Our customers' needs have changed over the years and they now need to manage and share data far more widely across the organization as well as the need to share some data externally i.e. with consultants, laboratories and staff at other locations with no direct IT link. We are therefore delighted to be able to offer MP5.Web as a means of simplifying access to the data management systems across different sites and geographies where communication in different languages is also an issue.

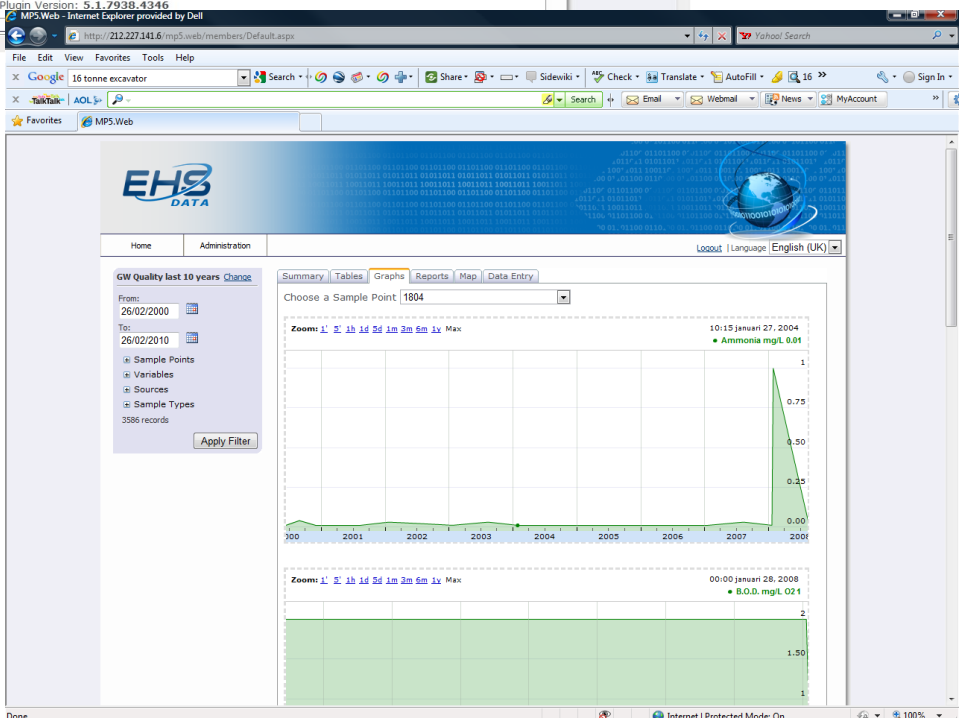
Please contact us for more details on this new product and how we can help you make the most of your data.



graphs and maps plus provides data entry with no installation or training required. This means that MP5 users now have the ability to share data more widely through their organization, as well as providing another simple route by which they staff can add data, whilst maintaining the rich functionality within their own MP5 client installs.

MP5.Web is designed for ease of use and allows filtering of data, data summaries and views of data within tables, graphs, reports and maps. Users or groups of users are allocated profiles which determine the data they are permitted to view or add to the system.

MP5.Web is fully internationalised. New languages can be plugged-in as required and easily



NEW MODIFICATIONS TO OUR INCIDENT MANAGEMENT SYSTEM

Following our news last month about our new product to manage incidents—IMS, we have



Incident Reporting Database

You have several draft incidents that have not been submitted. Click here to view them

Alternatively you can continue to raise a new incident below.

Submit a new Incident

- New Incident** (ALL Types including H&S, Environmental, vehicle/plant)
- New Complaint / Feedback**
- Log a Non-Compliance** (Internal or External audit, EA, SEPA, HSE)

Your Incidents

- Incidents you can edit
- Incidents you have submitted
- View Complaint Log

Search Incidents

- Search all incidents
- Search Injuries
- Search Complaints
- Search Non Conformances

Summaries

- Site Summary

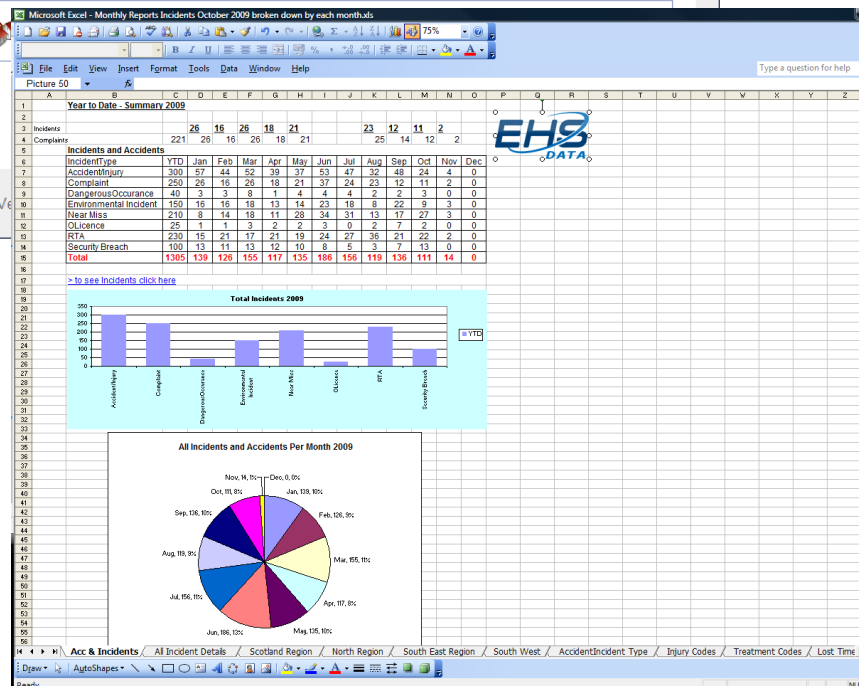
(e.g. accident/ injury) and sub type (e.g. parts of body injured or lost time incidents)

In addition reports can also be prepared when breaches or likely breaches of thresholds in environmental data occur. This is a particular requirement within the Environmental permits of many of our clients in the UK. In this case as a threshold breach occurs in MP5 a notification is automatically sent to IMS and a process is then created for the management of that event as an incident.

IMS is configurable in different languages and so in common with our other data management products can be freely used across international boundaries

We have created this product in line with the specific needs of a particular client but believe IMS is a valuable addition to our overall suite of EHS data management products. This further extends our ability to offer our customers a range of solutions for all their EHS Data management needs....

had a good deal of interest. The system is able to manage a whole range of incidents assign actions to individuals to deal with the incident and to track these through to closure. In addition to the ability to track separate incidents we are also able to generate reports on the overall occurrence of incidents so trends can be identified. This includes summaries for example by region, type



INMET MINING ADOPT MP5 AT THEIR CLOSED MINE SITES ACROSS NORTH AMERICA

open pit and underground silver, copper, zinc and lead mine in British Columbia, which closed in 1992.

- Sturgeon Lake – a 311 hectare open pit copper and zinc mine in Ontario which closed in 1980.
- Winston Lake – a 691 hectare underground copper and zinc mine in Ontario which closed in 1998.
- Copper Range – a 8700 hectare underground copper mine in Michigan USA

Two other closed properties are included in this. Lac Short is in the final stages of rehabilitation and will shortly be handed back to the Quebec Government and Millenbach where seepage from tailing and waste rock is being managed. Both of these sites are in Quebec.

Prior to using MP5, Inmet's closed sites personnel were using a large number of spreadsheets and Access databases to manage all this information. The process was labour intensive and complex.

sludge and liquid effluent with data including chemical composition, physical characteristics and toxicity. MP5 offers the ability to manage a host of data, and automate the processes of data import and validation. Data can then be scrutinised in a variety of ways in the system and reporting can be carried out in both French and English.

Brent Hamblin of Inmet Mining Corporation said 'The installation and use of MP5 is part of Inmet's risk management processes and our commitment towards our goal of Zero Harm to people, communities and the environment. MP5 helps us manage the varied data of our operations in an efficient and auditable fashion. At the moment we are using the system across the country,



Troilus mine site—an Inmet Copper and Gold mine North Western Quebec

which closed in 1995.

- Norbec – a 230 hectare underground copper and zinc mine in Quebec which closed operations in 1995.
- Troilus – a 737 hectare open pit copper and gold mine in Quebec which is expected to close in 2010.

Prior to install of our system we pre-populated the system with historical data received from Inmet and the system was installed in early 2010 and is now operational. The data currently managed in the system includes data for surface and groundwater, fish and sediment from local water courses,

and in the US, to manage our closed sites with the clear intention of increasing its use not only for compliance management but also as part of our sustainability process. We look forward to continuing to work with EHS Data as time progresses.'

'...MP5 helps us manage the varied data of our operations in an efficient and auditable fashion. ... using the system across the country, and in the US, to manage our closed sites with the clear intention of increasing its use not only for compliance management but also as part of our sustainability process. We look forward to continuing to work with EHS Data as time progresses'
**Brent Hamblin—
 Inmet Mining Corp.**

PRESENTATION AT GOLDFIELDS ENVIRONMENTAL MANAGEMENT GROUP IN WESTERN AUSTRALIA



Over the past few years the number of customers we have in Western Australia has grown with the latest addition at Sunrise Dam for

Anglo Gold Ashanti. Against this backdrop we are very pleased to be attending the Goldfields Environmental Management Group (GEMG)

meeting May 19-21 in Kalgoorlie. One of our staff, Richard Doyle, will be presenting at the conference and we will be exhibiting on

all three days. For details of the conference please contact Claire McGuire on +61 (0) 447 477 224 at secretary@gemg.org.au

BLUESCOPE STEEL IMPROVE ABILITY TO REPORT ENVIRONMENTAL DATA USING MP5

BlueScope Steel are a steel producing company with operations in Australia, New Zealand, Asia, Oceania and USA. In Australia they operate Port Kembla Steelworks, an integrated steelmaking operation with an annual production capacity of approximately 5.3 million tonnes of crude steel. It is the largest manufacturer and supplier of flat steel in Australia.

For many operators of industrial sites, including Port Kembla, the reporting of environmental data can be a laborious, and potentially error prone process. Data may reside in a variety of data management systems and reporting can be a matter of data retrieval, manipulation and cutting/pasting into Microsoft Word for example.

Each Quarter the operation at Port Kembla produce an environmental report which contains a very large amount of data (see table) and runs to approximately 175 pages – 165 pages of which are data from monitoring or derived from monitoring. Much of this includes tables and graphs and in some cases rolling averages are calculated and compared to threshold permissible limits. This can be quite a task each quarter.

In 2008 Port Kembla purchased MP5 for the management of its environmental data. MP5 is a completely flex-

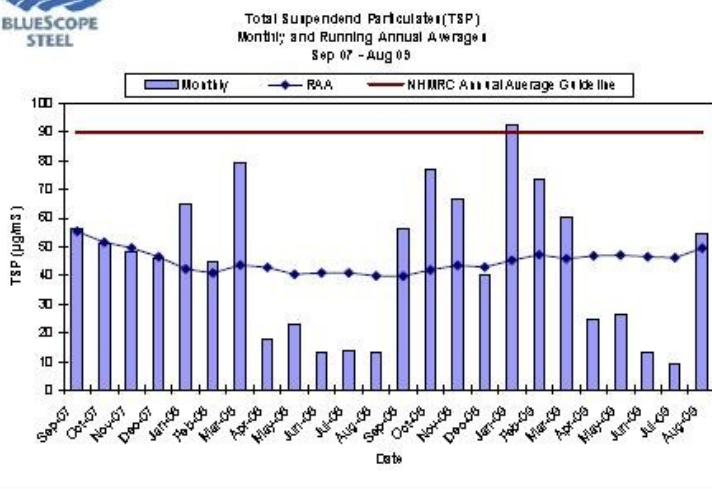
ible data management tool which enables users to define variables and sample points/locations at which they collect data. In the former case these variables can be raw data (e.g. iron in mg/l in effluent and flow in

also user defined an can be for example a borehole, an electricity meter, or a whole site against which site totals can be calculated for example on energy used or CO₂ produced.

as required. Crystal reports is also included as the reporting tool within the system and users can define any number of regular reports as templates to match the needs of regulators, internal committees, other external stakeholders or the board. Users can then populate and produce these reports when needed with a few mouse clicks. They can also be scheduled to be produced automatically and e-mailed as a PDF to defined recipients, or uploaded as an HTML file to appear on an intranet.

In the case of BlueScope steel the issue is to save on the person effort to regularly produce a very large report on a periodic basis. For other clients report templates have been produced to meet the needs of particular regional regulators, for example Discharge Monitoring Reports (DMR) in Arizona, USA as required by the Arizona Pollutant Discharge Elimination System. The reports can also be useful to share and report information in different languages where clients have operations in different geographies. All reports can be prepared by clients or via a report writing service we offer.

Data type	Variables presented
Drainage data	Tabulated data for last quarter including — daily flow, non filterable residue, TSS, Grease and oil, cyanide, ammonia, phenol, zinc, iron, cadmium, tin, chromium, mercury, salinity. Raw data (i.e. mg/l) as well as mass loadings (i.e. mg/day together with monthly means are produced. Graphed data for last two years including —temperature, non filterable residue, pH, BOD, oil and grease, ammonia, phenol zinc, cadmium, lead, Iron, chromium cyanide, Fluoride, tin, mercury, salinity, arsenic, selenium, copper, total nitrogen and phosphorus.
Weather data	Rain gauge data including tabulated data of rainfall in mm per day over the quarter with monthly totals and daily maxima and minima Wind rose data.
Stack monitoring data	Tabulated data of temperature, velocity, flow rate, particulates, SO ₃ , particulates below 10um, NOx, SO ₃ , CO ₃ , O ₃ , As, Cd, Pb, Mn, Ni, HCl, Cl, Cr (hexavalent), Hg and HS.
Ambient monitoring	Tabulated data including total suspended particles, Zn and Fe as 24hr average, average over quarter and max value. Raw data also presented as graph per day and compared to USEPA maximum guideline, monthly and running annual averages compared to annual average guidelines from Australian National Health and Medical Research Council Dust deposition. Tabulated data presented (Solids and speciated PAH) from various gauges. Monthly and running annual averages presented graphically and compared to EPA guidelines Benzene tabulated 24 hour average and graphical form with monthly and annual rolling averages.
Fuel use	Tabulated fuel use and sulphur content in fuel.



m³/day) or calculated data (e.g. mass loading of iron in kg/day calculated from the raw data). Locations are

The systems are compatible with MS Office and so data can be manually exported into word or excel and shared



LATEST NEWS:

Kagara Adopt MP5

Kagara own a significant base metal operation in north Queensland within an extensive tenement package stretching 500km and lying 100km to the west of Townsville and Cairns. The company operate several mining operations and base metal treatment facilities and in early 2010 purchased our MP5 system to manage their environmental data at their operation near to Cairns in Queensland Australia

Surrey County Council In UK use MP5 to manage landfill monitoring data

In the UK our systems are the dominant ones in use in the waste and landfill sector by both operators and regulators. Many of the closed sites have been inherited by County Councils as orphan sites and a significant number of these use our systems to manage data (<http://www.ehsdata.com/about-us/customers/local-government.aspx>). Surrey County Council were the most recent addition to this group and purchased the system in March 2010.

Severn Trent Laboratories (STL) introduce automated process for scheduling analysis from the MP-5 monitoring scheduler

As part of their Environmental Permitting obligations, Viridor, one of the UK's leading waste management companies, send over 10,000 samples a year to STL for environmental analysis. To speed up the analytical process, STL use a pre-registration system to record the testing requirements of each of Viridor's sites, before samples arrive at the laboratory. Previously, this data was entered into STL's management systems manually, a lengthy task that inevitably led to data entry errors. Any incorrectly entered data would delay the reporting of analysis to Viridor, who require a timely and consistent data service to meet Environment Agency deadlines for submitting analytical results. Working in partnership with STL and Viridor, EHS Data have developed an automated solution for collecting data on the analytical requirements of their customers.

Anglo Gold Ashanti go for MP5

We are pleased to announce that Anglo Gold Ashanti have purchased MP5 for the management of their environmental data at their Sunrise Dam project in Western Australia. Sunrise Dam is 220 km north-north-east of Kalgoorlie and exists as a large open pit and underground Operation.

EHS Data to present at the Goldfields Environmental Management Group (GEMG) conference in Kalgoorlie, May 19-21st 2010

GEMG are holding their annual conference and exhibition in Kagoorlie Western Australia in May 2010. EHS data will be presenting on day three and will be present as an exhibitor for all three days of the meeting.

Trade Mission to Tokyo

In February we took part in Trade mission to Japan and discussed data management needs from a Japanese perspective. Meetings were held with a number of environmental consulting firms and visits were made a several industrial operations.

See www.ehsdata.com/news.aspx for all of our news items

EHS Data Ltd

Business and
Commerce Centre,
Manners Road,
Newark.
Notts
NG24 1BS

Phone: +44 (0)845 496 2158
Fax: +44 (0)870 486 7989
E-mail:
graham.holtom@ehsdata.com